

## DIAMOND'S EDGE WATERFRONT ESTATE LOT 10

**MLS# 415590**

**US\$2,195,000**

*W Bay Bch North, Grand Cayman, Cayman Islands*

### Property Features

Location: **W Bay Bch North**

Status: **Current**

Type: **Land, Beach/Hotel/Tourism (For Sale)**

Width: **200**

Depth: **240**

Block: **17A**

Parcel: **358**

Acres: **0.6475**

Area: **20**

### Real Estates Main Features

Soil: **Marl**

Zoning: **Hotel/Tourism**

Views: **Water Front, Canal Front**

### Description

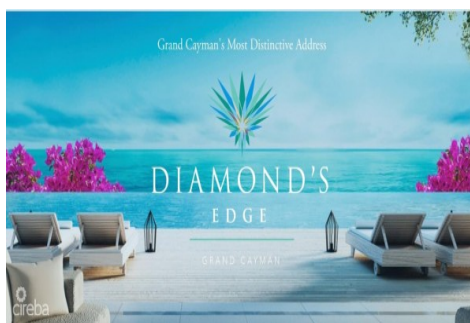
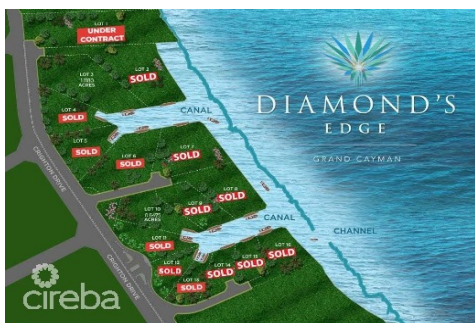
Build your dream home in one of the last remaining oceanfront lots in Cayman. Located on the North Sound, with unparalleled views and direct boating access this .6754 acre lot enjoys year round breezes and obstructed views of the North Sound.

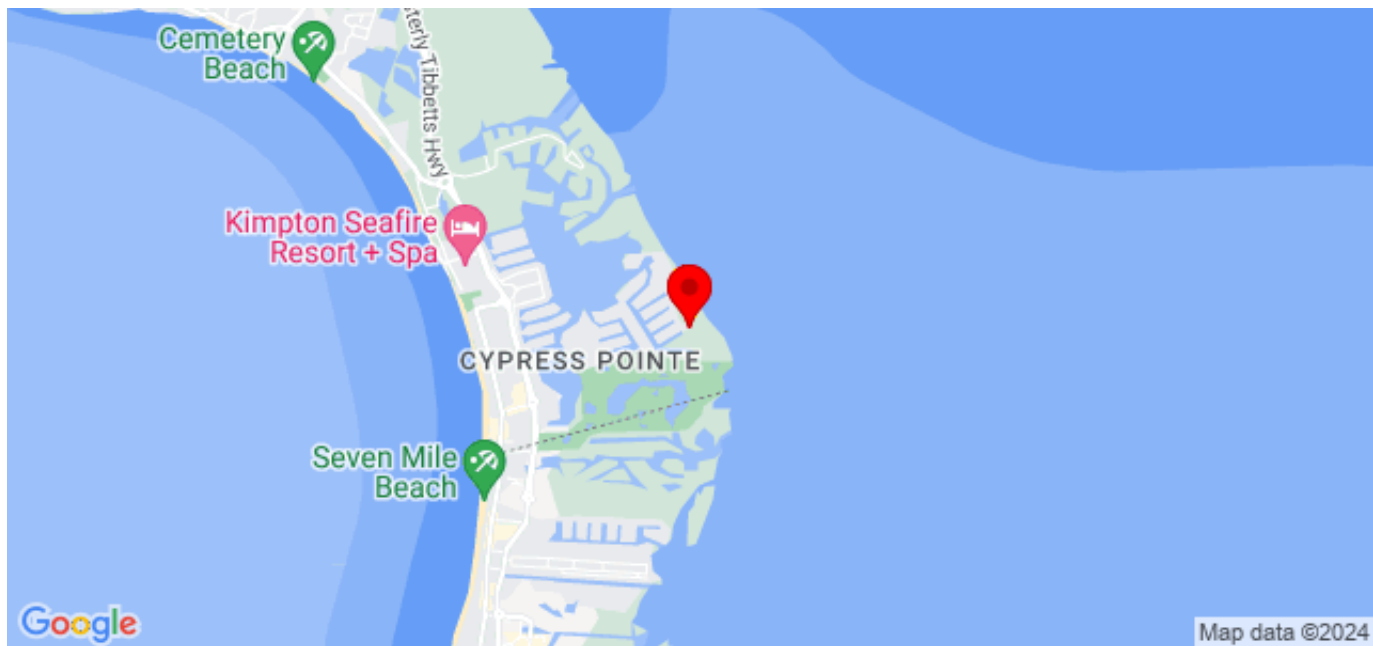
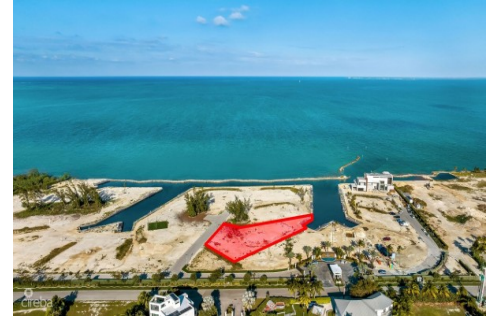
With high-end cantilevered docks built-in for every homeowner along with a native stone seawall surrounding the oceanfront canals you are ensured long term reinforcement and stability and your piece of paradise will have the seamless feel that makes this enclave unique.

From 24-hour manned CCTV security entrance gates to customized streetlights and curbing along with special design details in the common areas – manicured spaces, extensive landscaping, on site maintenance, private refuse collection and underground utilities – they all work in harmony to ensure that Diamond's Edge is finished to the highest standards.

Presenting a unique oceanfront enclave at Cayman's Most Distinctive Address. Diamond's Edge... A Rare Offering for the Discerning Few!

### Property Images





CIREBA MLS LDX feed courtesy of 1503 PROPERTY GROUP LTD

**\*Disclaimer:** The information contained herein has been furnished by the owner(s) and or their nominee and represented by them to be accurate. The listing company, agent and CIREBA MLS disclaims any liability or responsibility for any inaccuracies, errors or omissions in the represented information. The listing details herein are also courtesy of CIREBA (Cayman Islands Real Estate Brokers Association) MLS and/or via LDX (Listing Data Exchange) feed. All the information contained herein is subject to errors, omissions, price changes, prior sale or withdrawal, without notice and is at all times subject to verification by the purchaser(s).