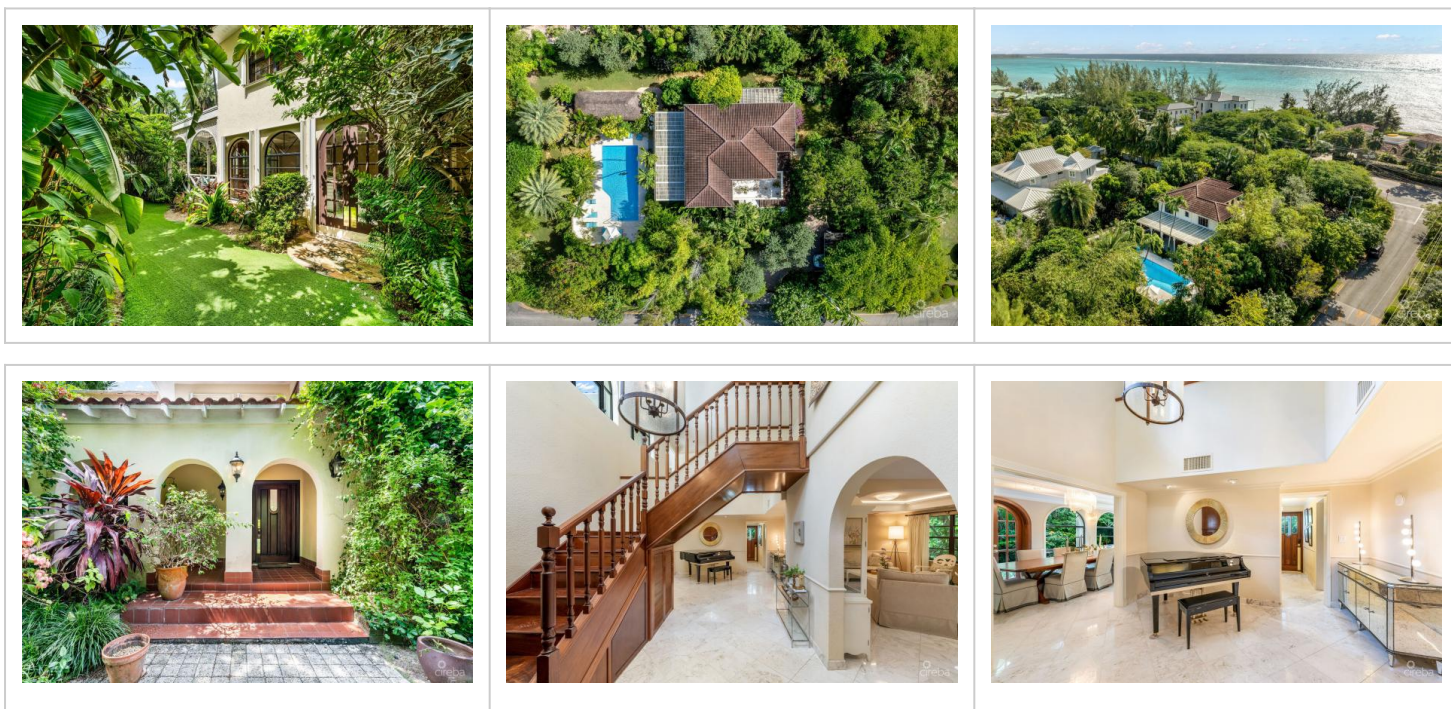


ANNE BONNY CRESCENT - CLASSIC COLONIAL WITH OUTDOOR ENTERTAINING

MLS# 419760 | South Sound, Grand Cayman, Cayman Islands

CI\$1,925,000



Agent info



Kraig Hislop

+1 345 938 7677

kraig@rainbow.ky

Description

Welcome to this timeless colonial-style residence, tucked away in the desirable South Sound community of Pirate Cove Estate, directly across from the Cayman Islands Tennis Club. Combining character, charm, and modern comfort, this home offers a truly inviting retreat.

Step inside to custom wood finishes, elegant arched windows framing lush garden views, and thoughtfully designed living spaces. The main floor features a formal dining room, a comfortable living room, and a den, alongside a separate kitchen and guest washroom. A cozy bar room adds extra character, making the home ideal for both relaxation and entertaining.

Upstairs, the home provides a private and comfortable retreat. The primary suite includes a spacious walk-in closet, a double vanity, and a large walk-in shower, with direct access to a terrace overlooking the lush gardens below. Two additional bedrooms share a well-appointed bathroom—one opens onto the terrace through elegant French doors, while the other features a custom closet—creating a practical and inviting layout for family or guests.

Outdoors, the property shines as a private sanctuary. The covered patio includes a bar, dining, and lounge area—perfect for gatherings—while the expansive 35-foot pool is surrounded by lush, mature gardens cultivated over 40 years.

Fully furnished and move-in ready, this two-story home on nearly half an acre offers 4,100 sq. ft. of comfortable living in one of Grand Cayman's most established neighbourhoods.

Property Features

Type	Status	View	Listing Type
Residential (For Sale)	Current	Garden View	Single Family Home
Bed	Bath	Sq Ft	Block/Parcel
3	3	4100.00	21E / 99
Area	Acres	Year Built	
30	0.46	1987	

Building Features

Pool

Yes

Additional Features

Zoning

Furnished

Foundation

Low Density residential

Yes

Slab