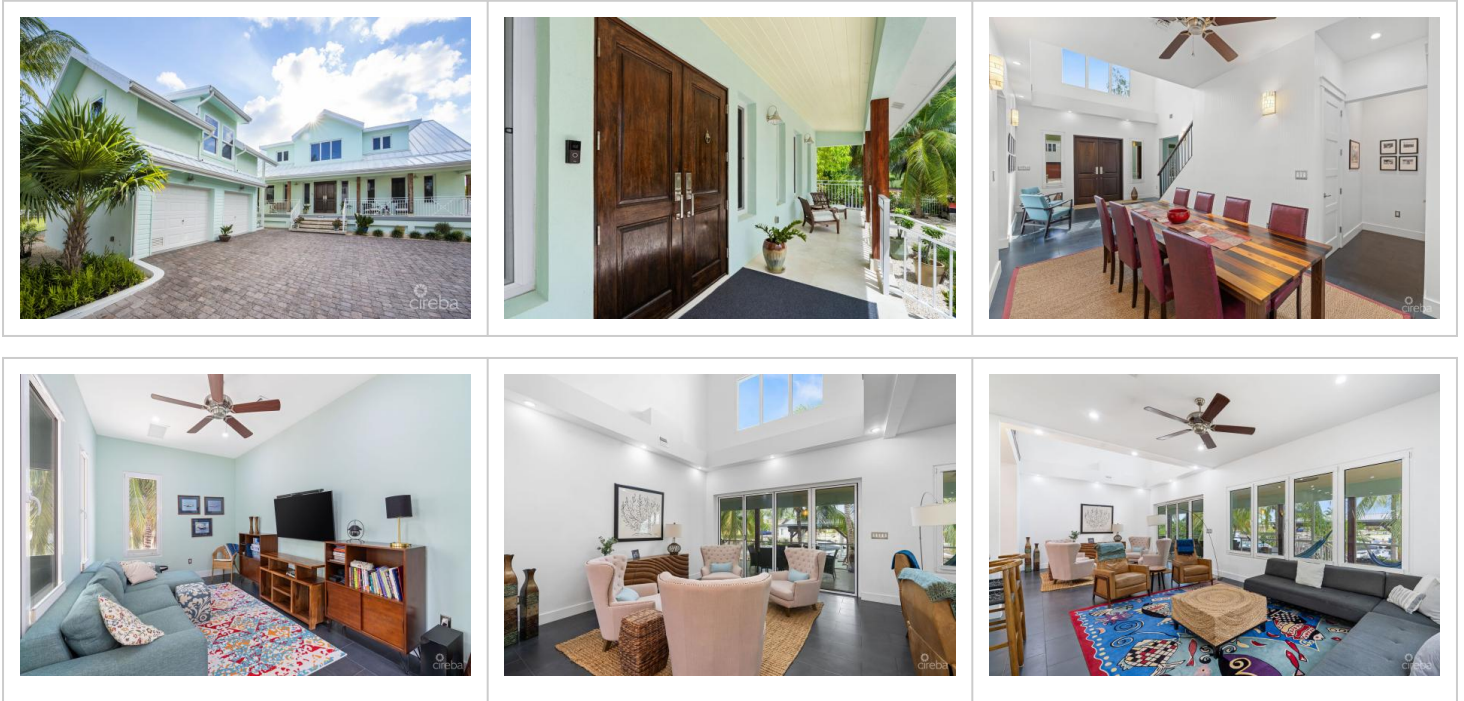


SUNRISE LANDING FAMILY HOME

MLS# 419780 | Savannah, Grand Cayman, Cayman Islands

CI\$1,850,000



Agent info



Kraig Hislop

+1 345 938 7677

kraig@rainbow.ky

Description

Executive Waterfront Home in Sunrise Landing

Located in the highly sought-after community of Sunrise Landing, this stunning executive waterfront home is a must-see. Perched twelve feet above sea level and thoughtfully designed, it offers the perfect blend of safety, style, and comfort, a dream spot for waterfront living and family life

Step inside to find soaring ceilings and light-filled rooms throughout. At the heart of the home, the chef's kitchen boasts a large granite island, abundant storage, a butler's pantry, and premium appliances, perfect for entertaining friends and family

The primary suite, conveniently located on the main level, features a spa-inspired walk-in shower and a spacious walk-in closet. Upstairs, two additional ensuite bedrooms are separated by a versatile landing ideal as a children's playroom or study area.

Outdoor living is equally impressive:

- Expansive screened patio for year-round dining and entertaining
- A resort-style swim spa framed by lush, low-maintenance gardens built for the climate
- A variety of mature fruit trees
- A custom 80-foot boat dock with swim ladder and floating jet ski dock

Additional highlights include a guest suite with kitchen and bath above the two-car garage, custom-built storage, and exceptional efficiency features:

- Custom tilt-and-turn, impact-rated tinted windows
- Spray foam insulation in attic and exterior walls
- Propane appliances and a 30KW propane generator

Built in 2017, this home combines modern efficiency with classic style and the kind of waterfront living families love

Property Features

Type	Status	View	Listing Type
Residential (For Sale)	Current	Canal Front, Canal View	Single Family Home

Bed	Bath	Sq Ft	Block/Parcel
4	4.5	4823.00	27C / 701
Area	Acres	Year Built	
40	0.35	2017	

Building Features

Garage

2

Additional Features

Zoning	Furnished	Approx. Water Frontage	Foundation
Low Density residential	Yes	100	Slab