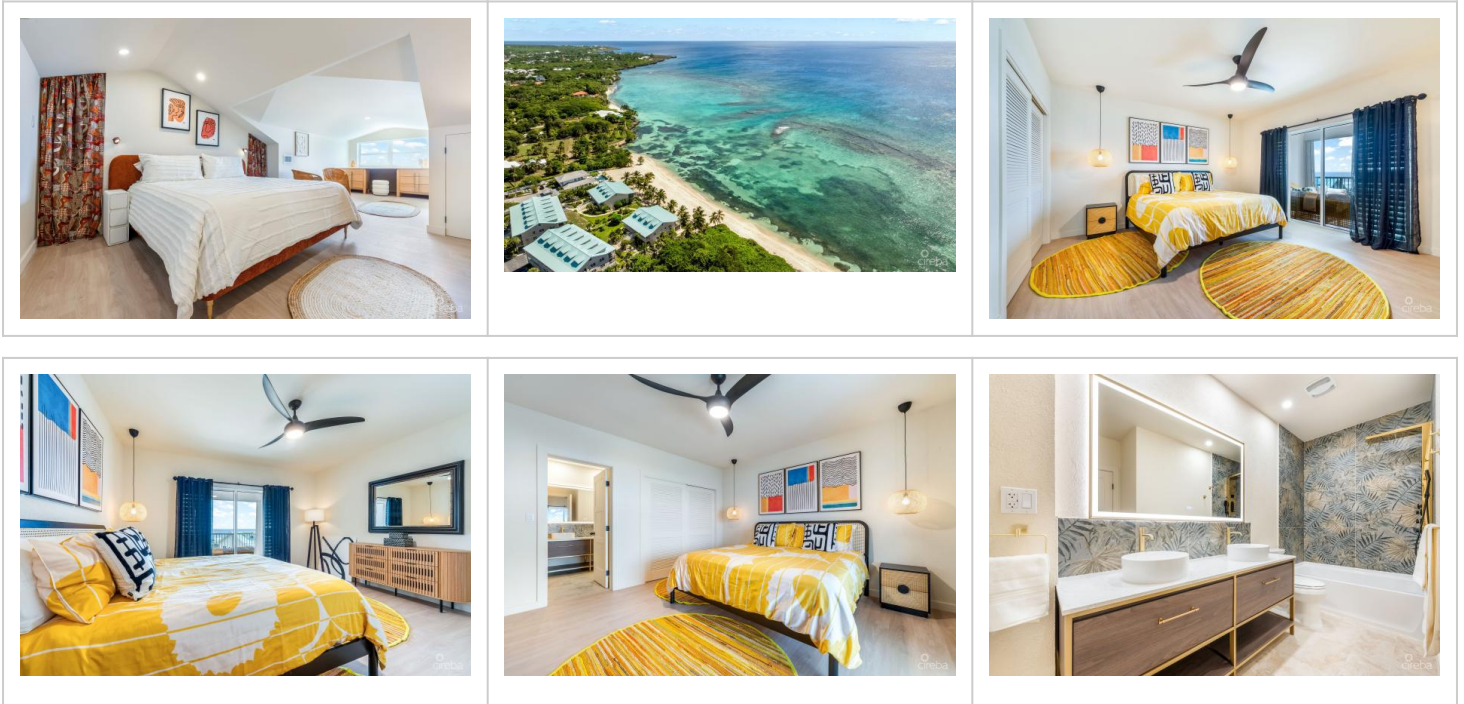


## SUPERB VALUE AND VIEWS ON SPOTTS BEACH - 15 CORAL BAY VILLAGE

MLS# 420021 | Spotts, Grand Cayman, Cayman Islands

CI\$1,244,000



### Agent info



**Kraig Hislop**

+1 345 938 7677

[kraig@rainbow.ky](mailto:kraig@rainbow.ky)

---

## Description

Welcome to the epitome of casual coastal elegance situated on the serene Spotts Beach - possibly the best swimming and snorkelling on Grand Cayman's south coast. Presenting a top-level Beachfront Residence, a newly refurbished gem boasting an expansive 2,450 sq ft of comfort, where every detail speaks of refinement. This superb property offers three bright and airy bedrooms, three modernised bathrooms, a work from home mezzanine level and the unparalleled beauty of a sandy, reef protected beachfront and crystal clear Caribbean Sea right at your doorstep.

Imagine starting your day on the screened terrace, sipping your morning coffee as you bask in panoramic views of the multi-blue Cayman waters. This fully furnished home provides not only a serene living experience but also significant short-term rental potential, thanks to its prime location and resort-style amenities. Dive into relaxation with easy access to nearby restaurants, families will appreciate the proximity to reputable schools, ensuring a seamless transition for those relocating. And when it's time to indulge in a bit of retail therapy, a variety of shopping and amenity options are conveniently accessible, adding to the lifestyle appeal of this exceptional property.

Discover the true essence of island living with this exquisite beachfront residence, where luxury meets tranquility in the heart of the Cayman Islands. Don't miss this opportunity to own this piece of beachfront bliss, where timeless memories await.

---

## Property Features

Type	Status	View	Listing Type
<a href="#">Residential (For Sale)</a>	<a href="#">Pen/Con</a>	<a href="#">Beach Front, Beach View</a>	<a href="#">Condominium</a>
Bed	Bath	Sq Ft	Block/Parcel
<a href="#">3</a>	<a href="#">3</a>	<a href="#">2451.00</a>	<a href="#">25C / 80H21</a>
Area	Year Built		
<a href="#">40</a>	<a href="#">1980</a>		

---

## Additional Features

Floor Level	Furnished	Approx. Water Frontage
<a href="#">2</a>	<a href="#">Yes</a>	<a href="#">250</a>

---