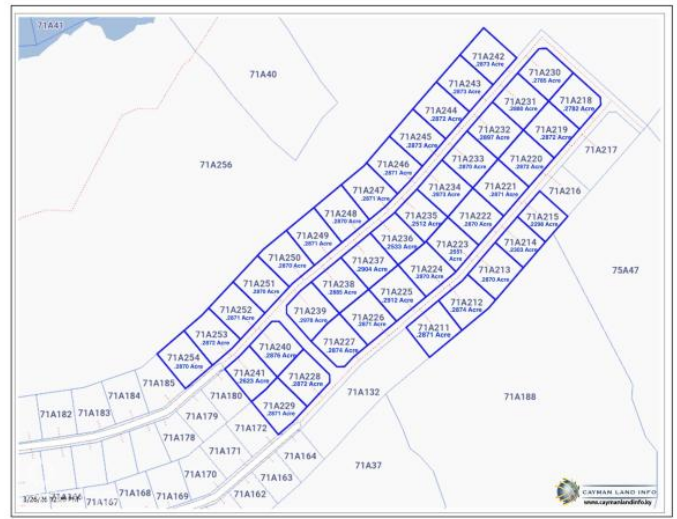


CORAL COURTS SUBDIVISION - FARM ROAD EAST END

MLS# 420612 | East End, Grand Cayman, Cayman Islands

CI\$152,208



Agent info



Kraig Hislop

+1 345 938 7677

kraig@rainbow.ky

Description

Consider investing in this spacious lot, whether it's for your family's future home with ample space for a garden, or for building a duplex as an investment. The neighborhood is healthful, peaceful, and well-established.

Property Features

Type	Status	View	Listing Type
Land (For Sale)	Current	Garden View	Low Density Residential
Width	Depth	Sq Ft	Block/Parcel
108.00	114.00	0.00	71A / 225
Area	Acres		
75	0.29		

Additional Features

Soil	Zoning
Marl	Low Density residential