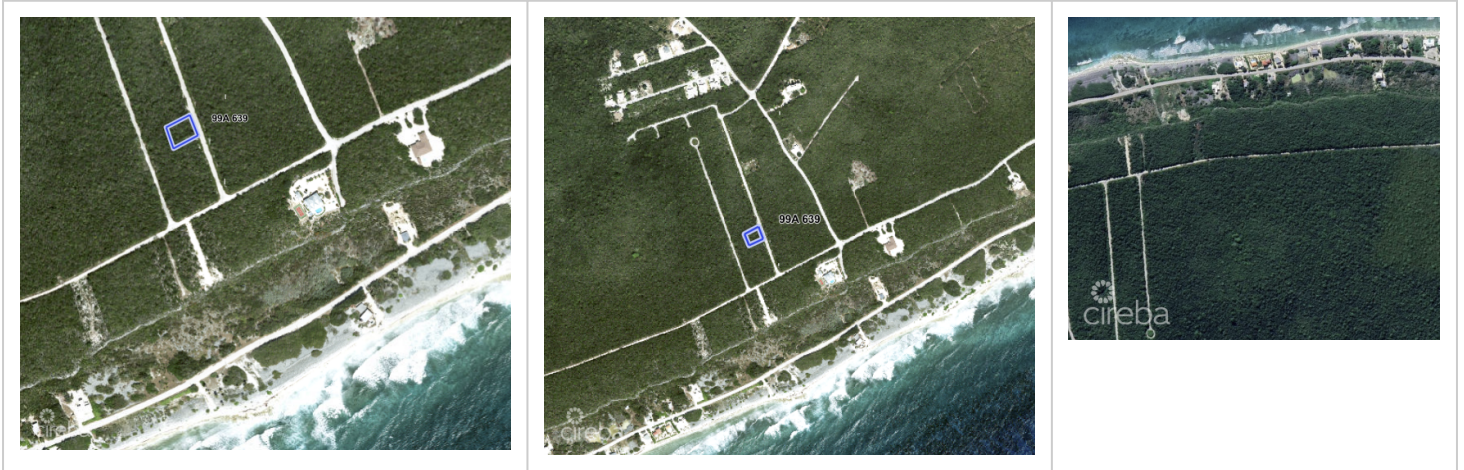


PREMIUM ELEVATED LOT IN THE HEART OF CAYMAN BRAC

MLS# 420699 | Cayman Brac Centr, Cayman Brac, Cayman Islands

CI\$62,000





Agent info



Kraig Hislop

+1 345 938 7677

kraig@rainbow.ky

Description

Parcel 99A639 is a beautifully positioned 0.28-acre residential lot located within the emerging Isabela Estates community on the Cayman Brac Bluff. With strong elevation, ready-to-install utilities, and superior road access, this parcel offers a rare combination of safety, convenience, and long-term value.

This is an ideal opportunity for a future home, a long-term investment, or a generational landholding in one of the island's most stable and desirable interior zones.

Elevated & Secure

- 38 feet above sea level
- Naturally hurricane-resilient
- Solid limestone foundation ideal for construction

Build-Ready Infrastructure

- Electrical Utility: Fully paid and ready for immediate installation.
- Chip & spray surfaced road (superior to marl)
- Two road access points into the estate

Ideal Central Location

- 1500 ft from the sea
- 1 mile from Le Soleil D'or Hotel
- Quiet, private, and elevated
- Minutes from airport, grocery, schools, and medical services

Strong Investment Profile

- Located in a growing residential corridor
- Elevated land continues to appreciate faster than coastal interior lots

Property Features

Type	Status	View	Listing Type
Land (For Sale)	Current	Garden View	Little Cayman/Cayman Brac
Width	Depth	Sq Ft	Block/Parcel
127.00	112.00	0.00	99A / 639
Area	Acres		
85	0.28		

Additional Features

Road Frontage
112