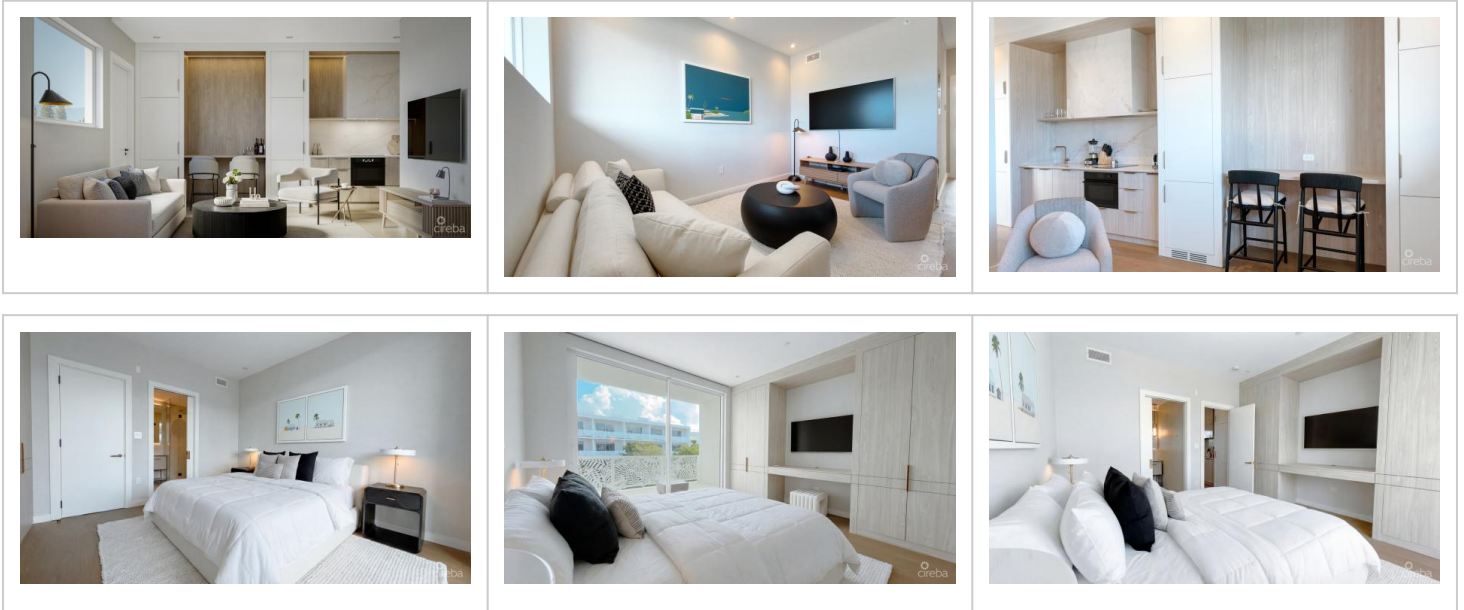


## THE GROVE TOO #14 ONE BED CONDO

MLS# 420717 | W Bay South, Grand Cayman, Cayman Islands

US\$1,198,000



### Agent info



**Kraig Hislop**

+1 345 938 7677

[kraig@rainbow.ky](mailto:kraig@rainbow.ky)

---

## Description

## The Grove Too - One Bedroom Residence

### Moments from Seven Mile Beach

This is one of the final opportunities to secure a one-bedroom residence at The Grove Too, an exclusive boutique development inspired by the proven success of The Grove and thoughtfully designed for those who appreciate refined, contemporary living in one of Grand Cayman's most desirable locations.

Centred around a striking courtyard garden by internationally acclaimed Enea Garden Design, The Grove Too harmonises modern architecture with natural serenity. With Class-A office and medical spaces at ground level and just 68 luxury residences above, the development offers a curated, low-density lifestyle defined by privacy, security, and convenience, all just minutes from Seven Mile Beach, world-class dining, shopping, and entertainment.

Each residence is crafted with attention to detail, featuring open-plan living spaces, oversized balconies overlooking the lush courtyard, custom German kitchens, premium millwork, solid brass fixtures, oak wood flooring, and high-end appliances throughout.

Security and ease of living are paramount, with key-card entry, 24-hour manned security, CCTV, electronic locks, in-unit laundry, and optional furnishing packages. A professionally managed rental program also offers flexibility for owners seeking investment potential alongside lifestyle appeal.

A signature feature of The Grove Too is its expansive rooftop terrace spanning the west building, offering panoramic views of the Caribbean Sea and North Sound. Residents enjoy a resort-style pool and hot tub, sauna and steam rooms, meditation garden, children's play areas, social spaces, and a rooftop bar, amenities rarely found in boutique developments of this scale.

Constructed to exceed Miami-Dade hurricane standards, the building incorporates reinforced poured concrete, missile-rated glazing, elevated base construction, and energy-efficient systems designed for durability and long-term performance.

---

## Property Features

Type	Status	View	Listing Type
Residential (For Sale)	Current	Garden View	Condominium
Bed	Bath	Sq Ft	Block/Parcel
1	1	711.00	11D / 127H11
Area	Year Built		
20	2025		

---

## Building Features

Pool	Garage	Pets
Yes	1	No

---

## Additional Features

Floor Level	Furnished
2	Yes