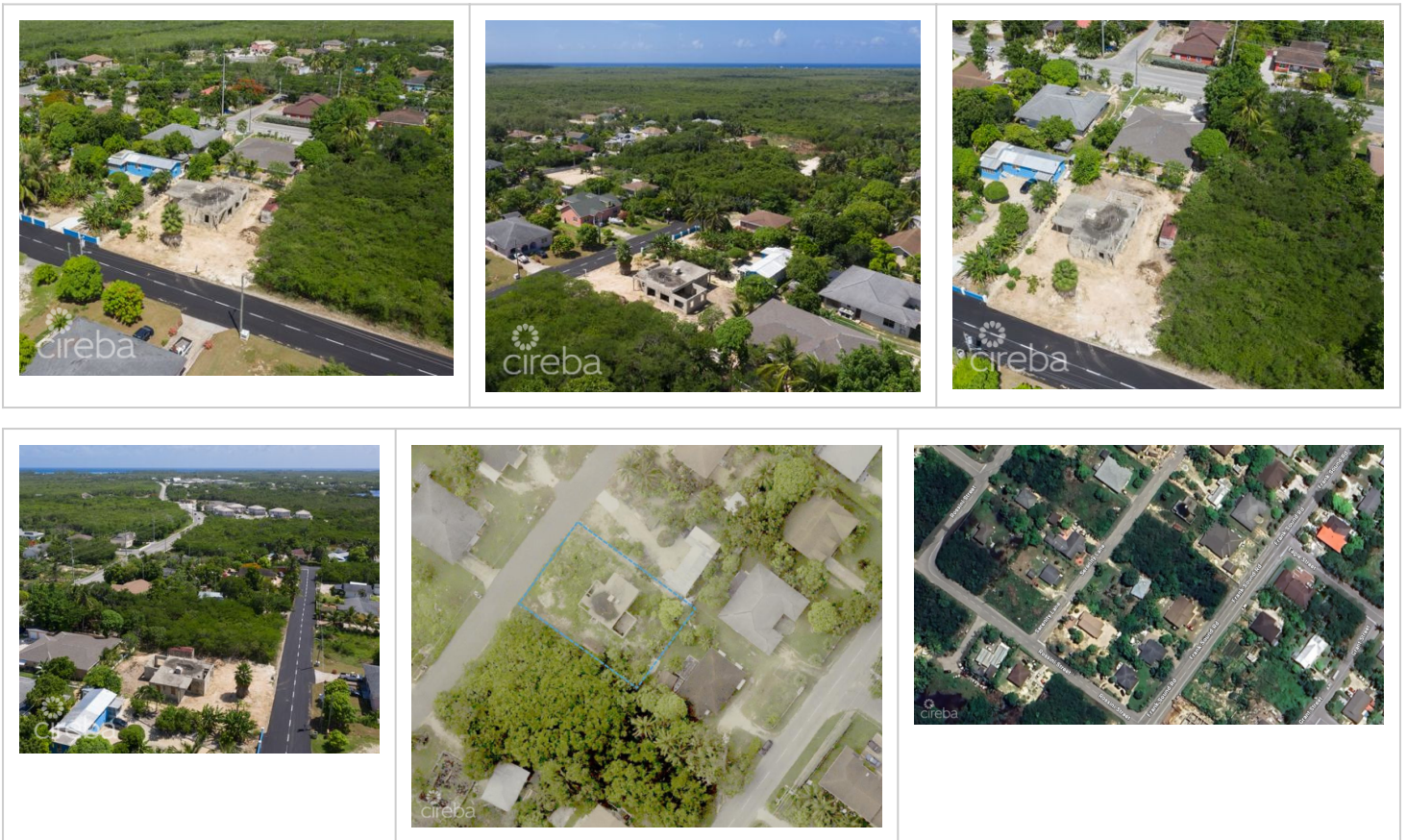


## NORTH SIDE DEVELOPMENT LOT WITH PARTIAL CONSTRUCTION & PLANS

MLS# 420913 | Midland East, Grand Cayman, Cayman Islands

CI\$299,000



### Agent info



**Kraig Hislop**

+1 345 938 7677

[kraig@rainbow.ky](mailto:kraig@rainbow.ky)

---

## Description

This property features a cleared, levelled lot in a quiet residential neighbourhood, offering a prime foundation for a residential project. The land has fertile soil with mature fruit trees, ready for landscaping and gardening. Agent owned.

Structure Details: The site includes a partially constructed two-story residence designed to reach 2,663 sq. ft. upon completion. Significant structural work has been finalised, including:

- Reinforced foundation
- Structural framing for both floors
- Staircase installation

This property provides a substantial head start on development, with the primary structural components already in place.

---

## Property Features

Type	Status	View	Listing Type
Land (For Sale)	New	Garden View	Low Density Residential
Width	Depth	Sq Ft	Block/Parcel
102.00	102.00	0.00	54D / 93
Area	Acres		
60	0.24		

---

## Additional Features

Soil	Zoning	Road Frontage
Black	Low Density residential	Yes