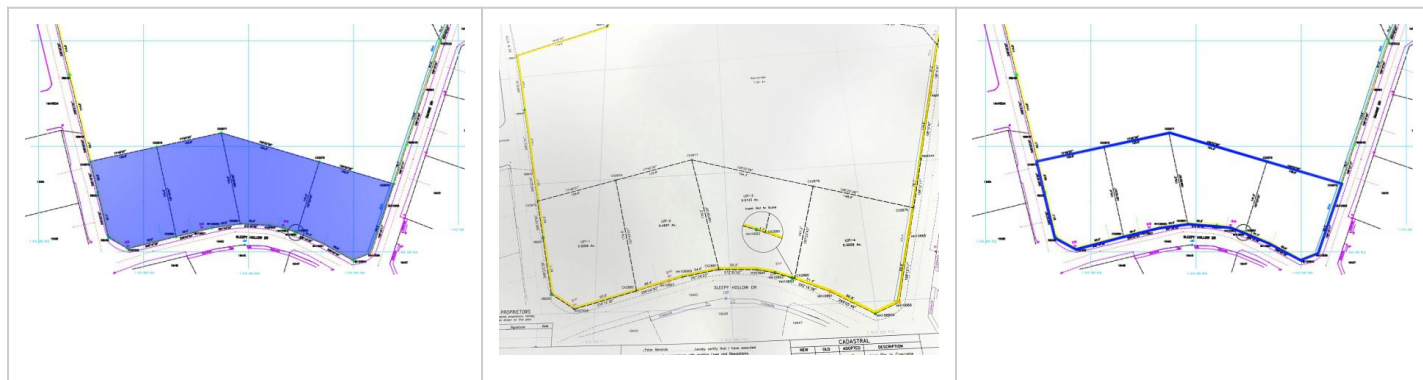


Industrial Land 0.5058 Acres Lot 1

MLS# 420232 | W Bay Bch South, Grand Cayman, Cayman Islands

CI\$1,872,775



Agent info



Charlie Brown

+1 345 916 0910

charlie@rainbow.ky

Description

9.55 Acres | Industrial Zoning | Central & High Traffic Area

One of the most prime development parcels remaining in George Town's industrial corridor and the last available lot in sought after "Industrial Park". This 0.5058 acre site offers unmatched potential for a mixed use commercial or industrial development, ideally suited for warehousing, logistics, retail, or manufacturing. Strategically positioned in a high traffic, central location, the property sits just minutes from the Owen Roberts International Airport, with easy access to the Airport Access Road, Esterley Tibbetts Highway, and Camana Bay.

This is a rare opportunity to acquire one of the last large, developable industrial parcels in the heart of George Town, ready for immediate development or long term investment.

Property Features

Type	Status	View	Listing Type
Land (For Sale)	Pen/Con	Garden View	Industrial
Width	Depth	Sq Ft	Block/Parcel
129.80	174.40	0.00	19A / 89LOT1
Area	Acres		
20	0.51		

Building Features

City Water

Yes

Additional Features

Road Surface	How Shown	Soil	Topography
Asphalt	Drive by	Marl	Level
Zoning	Road Frontage	Trees	Title
Heavy Industrial	130	Clusters	Freehold
Frontage Road			
City Maintained			
