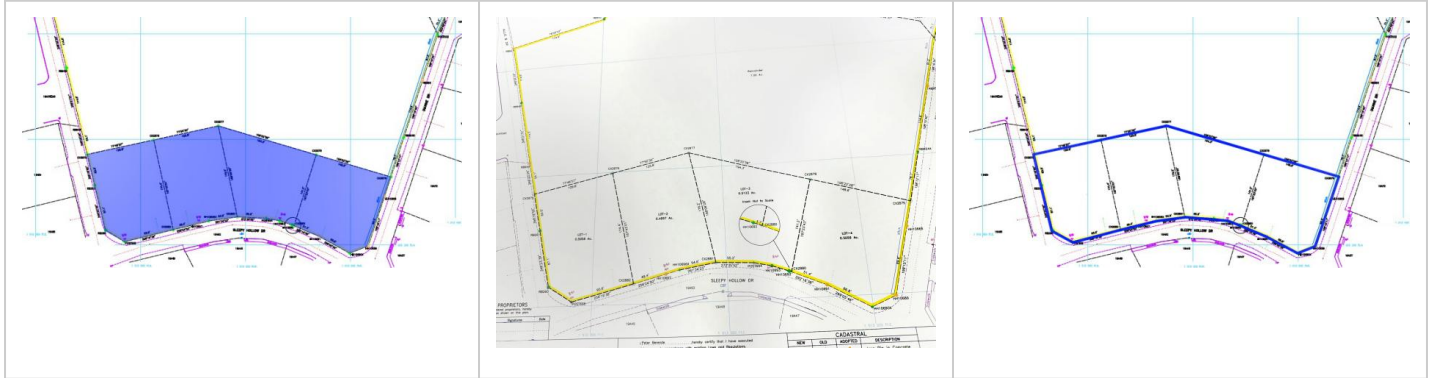


Industrial Land - 0.4997 Acres Lot 2

MLS# 420225 | W Bay Bch South, Grand Cayman, Cayman Islands

CI\$1,850,189



Agent info



Charlie Brown

+1 345 916 0910

charlie@rainbow.ky

Description

0.4997 Acres | Industrial Zoning | Central & High Traffic Area

One of the most prime development parcels remaining in George Town's industrial corridor and the last available lot in sought after "Industrial Park". This 0.4997 acre site offers unmatched potential for mixed-use commercial or industrial development, ideally suited for warehousing, logistics, retail, or manufacturing. Strategically positioned in a high traffic, central location, the property sits just minutes from the Owen Roberts International Airport, with easy access to the Airport Access Road, Esterley Tibbetts Highway, and Camana Bay.

This is a rare opportunity to acquire one of the last few industrial lots in the heart of George Town, ready for immediate development or long-term investment

Property Features

Type	Status	View	Listing Type
Land (For Sale)	Pen/Con	Garden View	Industrial
Width	Depth	Sq Ft	Block/Parcel
125.00	176.20	0.00	19A / 89LOT2
Area	Acres		
20	0.5		

Building Features

City Water

Yes

Additional Features

Road Surface	How Shown	Soil	Zoning
Asphalt	Drive by	Marl	Heavy Industrial
Road Frontage	Trees	Title	Frontage Road
125	Clusters	Freehold	City Maintained
Possession			
At Closing			
