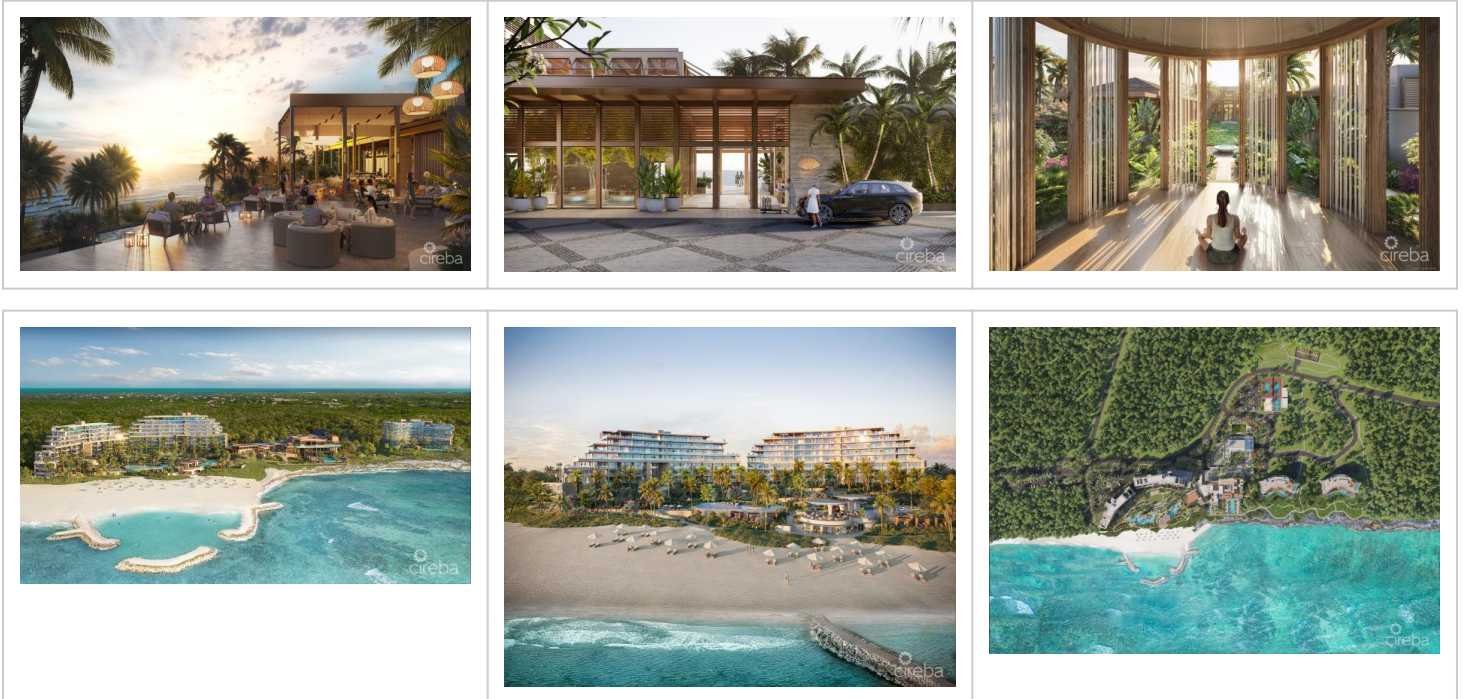


## MANDARIN ORIENTAL RESIDENCES, GRAND CAYMAN

MLS# 415593 | Lower Valley, Grand Cayman, Cayman Islands

US\$12,100,000



### Agent info



**Kraig Hislop**

+1 345 938 7677

[kraig@rainbow.ky](mailto:kraig@rainbow.ky)

---

## Description

Offering a perfect synthesis of indoor and outdoor living, this 2-bedroom, 2.5-bathroom residence crowns the corner of the 9th floor in the West Hotel Tower and is one of the last remaining penthouses. Positioned to offer the finest views in the Caribbean, experience sunrise to sunset from this limited-edition corner residence.

Designed by Hart Howerton, with interiors by Meyer Davis, Mandarin Oriental Residences, Grand Cayman introduce a new level of craftsmanship to Grand Cayman. Every detail has been considered and a richly layered use of natural materials create an authentic connection to the tropical setting.

Mandarin Oriental manages the most coveted addresses around the world, including One Hyde Park London and Time Warner Center New York. Now their legacy of intuition and sophistication arrives on the shores of Grand Cayman as the first Residences at Mandarin Oriental in the Caribbean.

\*Pricing will be increased as the project progresses, do not miss the opportunity to get in now.

\*Monthly maintenance and insurance costs are to be confirmed.\*

---

## Property Features

|                        |            |             |                  |
|------------------------|------------|-------------|------------------|
| Type                   | Status     | View        | Listing Type     |
| Residential (For Sale) | Current    | Beach Front | Condominium      |
| Bed                    | Bath       | Sq Ft       | Block/Parcel     |
| 2                      | 2.5        | 4314.00     | 32D / 122UNIT904 |
| Area                   | Year Built |             |                  |
| 50                     | 2028       |             |                  |

---

## Building Features

|      |      |
|------|------|
| Pool | Pets |
| Yes  | No   |

---

## Additional Features

Floor Level

9

Approx. Water Frontage

700

Foundation

Slab