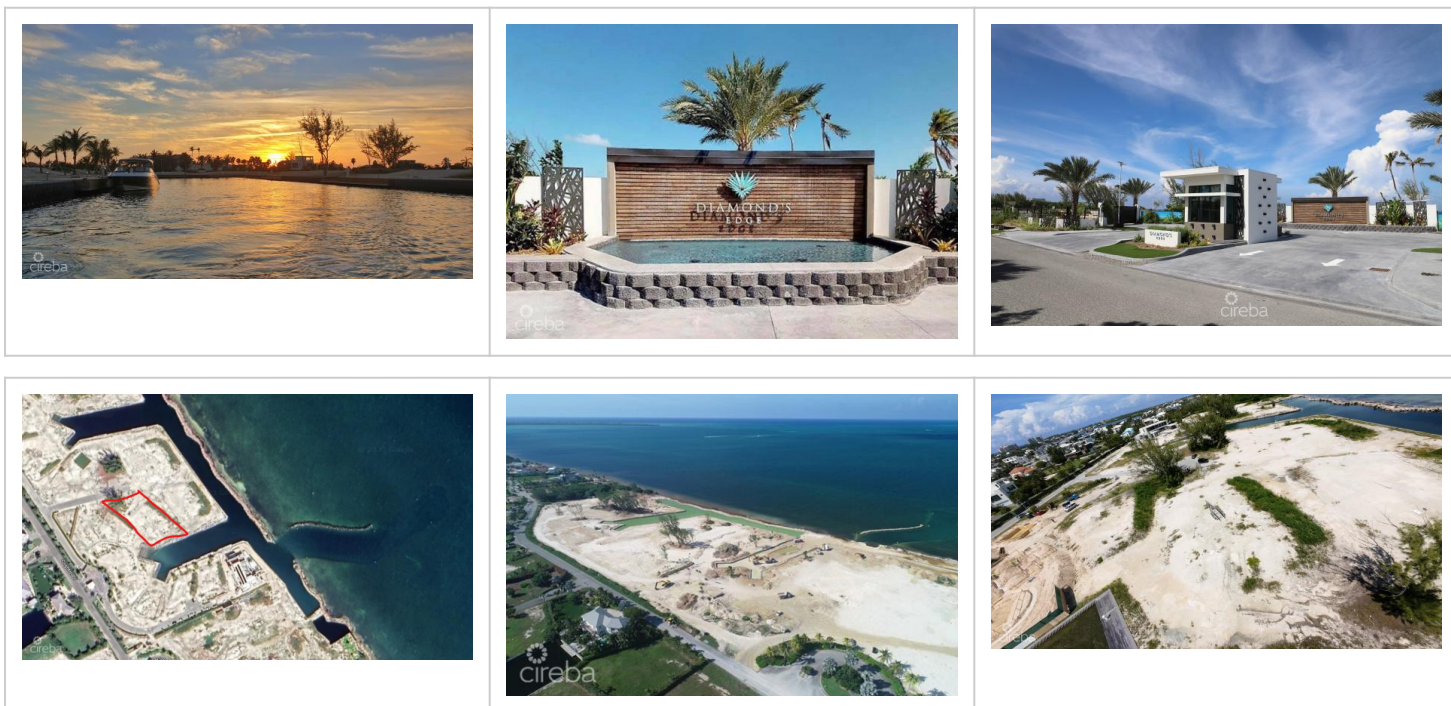


DIAMOND'S EDGE WATERFRONT ESTATE LOT 9

MLS# 416099 | W Bay South, Grand Cayman, Cayman Islands

US\$2,249,000



Agent info



Kraig Hislop

+1 345 938 7677

kraig@rainbow.ky

Description

Diamond's Edge is one of Cayman's most distinctive addresses located in Crystal Harbour, a truly luxurious waterfront development with unobstructed breathtaking views of the North Sound. We are pleased to offer a distinguishing buyer the opportunity to own a beautiful lot, filled to eight feet+ above sea level in the prestigious development. All it awaits is the construction of your dream home.

Diamond's Edge is Cayman's newest and most exclusive waterfront subdivision located in the center of the Seven Mile Beach corridor, adjacent to North Sound Golf Club and minutes away from excellent restaurants and entertainment choices.

Diamond's Edge is truly one of a kind, painstakingly designed with incredible attention to detail. The development will be a gated community with 24-hour manned security, crystal-studded gates, and water features.

Each elevated lot, includes a Brazilian IPE cantilevered dock, providing direct boating access to and from the North Shore; the canals are surrounded by seawalls constructed from native stone, ensuring stability for the future properties. The development will also include lush landscaping with well-lit streets leading to each residence.

Your investment in a lot at Diamond's Edge is protected by strict, though not unreasonable, covenants, assuring a quality lifestyle without compromising your individuality. There are only a few lots in this exclusive development, contact us now to make this amazing lot yours. All dimensions are approximate.

Property Features

Type	Status	View	Listing Type
Land (For Sale)	Pen/Con	Canal Front, Water Front	Beach/Hotel/Tourism
Width	Depth	Sq Ft	Block/Parcel
120.00	220.00	0.00	17A / 359
Area	Acres		
20	0.56		

Additional Features

Soil
Marl

Zoning
Hotel/Tourism

Road Frontage
70