

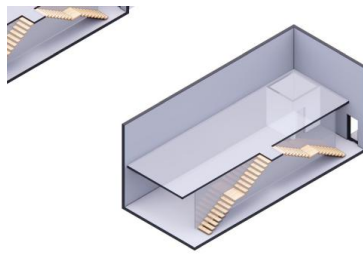
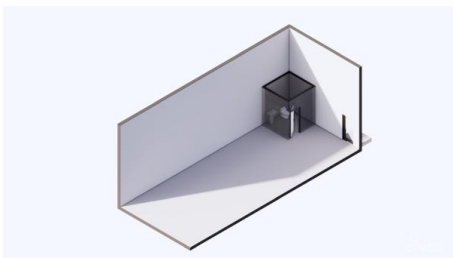
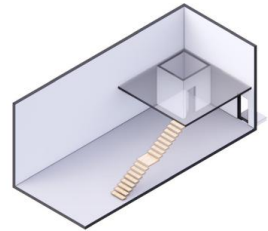
GEORGE TOWN BUSINESS PARK - WAREHOUSE, OFFICE, RETAIL AND MORE

MLS# 419109 | George Town Centr, Grand Cayman, Cayman Islands

CI\$660,000



Property Map



Agent info



Kraig Hislop

+1 345 938 7677

kraig@rainbow.ky

Description

Positioned in the heart of George Town's business district, GT Business Park offers a rare opportunity to secure a commercial space in a prime location within the city's Golden Triangle, conveniently situated between Mary Street and Godfrey Nixon Way.

Key Features:

- Modern Commercial Units – 1,060 sq. ft. footprint with structural provisions for an additional second floor, expanding to 2,120 sq. ft. Add'l 600 sq ft of mezzanine is included in price.
- Strategic Location – High visibility and accessibility within George Town's commercial hub.
- Sustainability Focused – Each unit is equipped with a 5KW solar panel system under the CUC CORE Programme, feeding unused electricity back to the grid for energy credits.
- Built for Resilience – Category 5 hurricane-rated structure with a rigid moment-resisting frame and 10' above sea level elevation.
- High-Performance Building Envelope – Engineered for durability, efficiency, and climate resilience.
- Ample Parking – Over 60 parking spaces for convenience.
- Versatile Design – Open floor plans without load-bearing walls, allowing for flexible configurations such as:
 - High-value climate-controlled storage
 - Commercial enterprises
 - Office spaces
 - Multi-level setups
 - Unlock the Potential of Your Business

Designed with adaptability in mind, these units seamlessly integrate structural, mechanical, electrical, and plumbing accommodations—allowing for maximum efficiency and customization.

Whether you need a high-tech workspace, showroom, or scalable business hub, GT Business Park provides a future-proof solution in a thriving commercial district.

Don't miss this opportunity to be part of George Town's revitalization and secure a space in one of the Cayman Islands' most forward-thinking developments.

Property Features

Type	Status	View	Listing Type
Commercial (For Sale)	Current	Garden View	Warehouse
Sq Ft	Block/Parcel	Area	Acres
2000.00	14CF / 214H9	30	1.46
Year Built			
2025			

Additional Features

Foundation
Slab