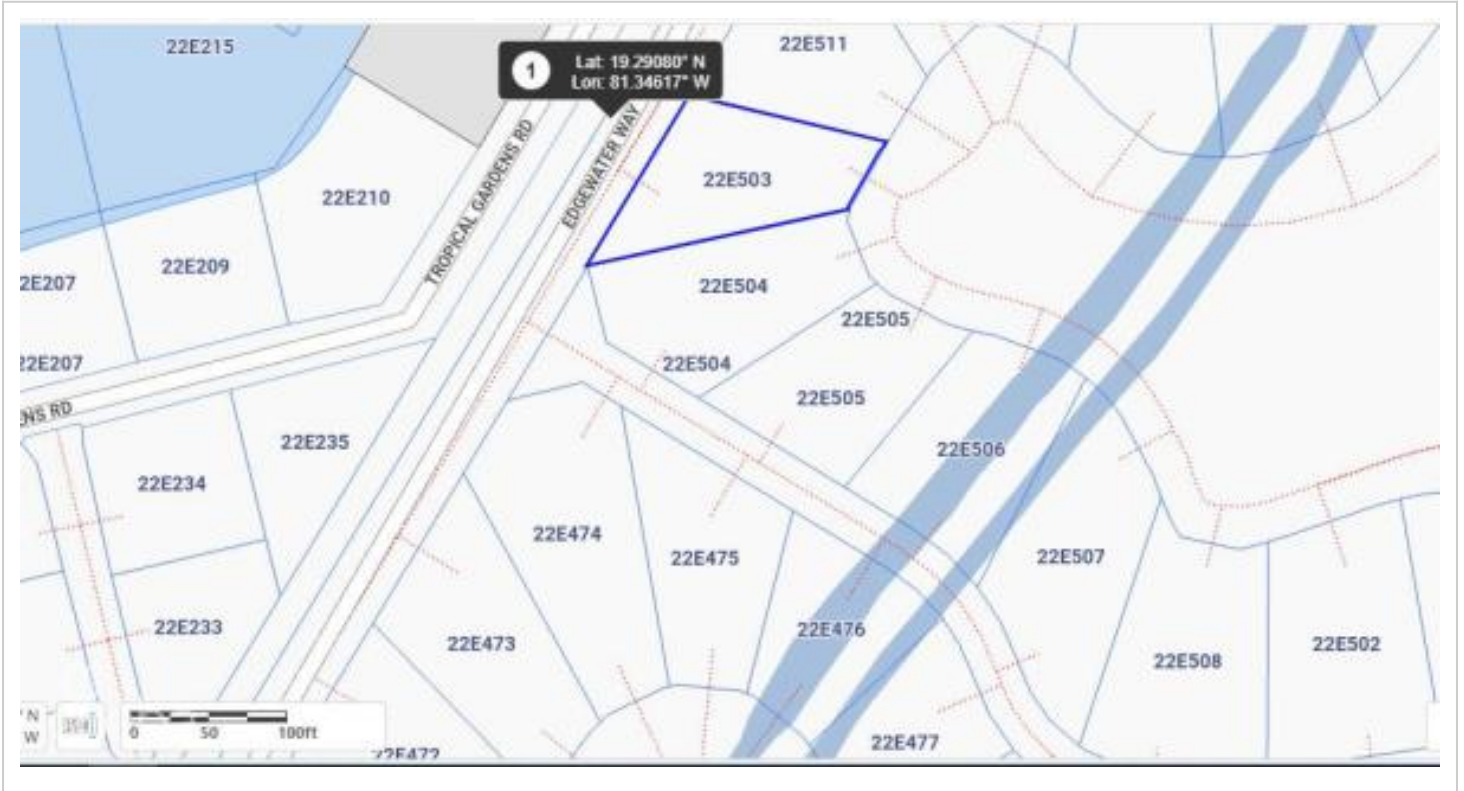


PRIME LOCATION CANAL FRONT HARBOUR REACH

MLS# 419227 | Prospect, Grand Cayman, Cayman Islands

CI\$539,000



Agent info



Kraig Hislop

+1 345 938 7677

kraig@rainbow.ky

Description

Prime location, in a sought-after community on the canal, in a serene environment, sounds like paradise & it is paradise.

Canal view house lot in the prestigious Harbour Reach community in Grand Harbour.

Harbour Reach is Canal lot community with direct access to the North Sound with a cantilevered 40 foot dock, this and these lots are all filled with compacted aggregate and safety retained by a keystone seawall which means there is no need for the added expense of pilings.

Harbour Reach offers a 24-7 manned gatehouse with strong covenants to ensure high standards and quality upliftment of this beautifully landscaped community conveniently located within walking distance of Harbour Walk complex & Grand Harbour Shopping Complex with restaurants, café, Hurleys supermarket.

Cash purchase preferred.

Property Features

Type	Status	View	Listing Type
Land (For Sale)	Current	Canal View	Low Density Residential
Width	Depth	Sq Ft	Block/Parcel
95.00	135.00	0.00	22E / 503A
Area	Acres		
40	0.26		

Additional Features

Zoning

Low Density residential